

THE SHERMAN BUILDING

101 N ELM ST
DENTON, TX 76201

Brad Tyndall
O: 940.381.2220
brad.tyndall@svn.com



Property Summary



OFFERING SUMMARY

Lease Rate:	Call for Pricing
Building Size:	8,467 SF
Available SF:	4,849 SF

PROPERTY OVERVIEW

This beautiful two story building is well suited for office, retail and restaurant uses. The second floor is a move in ready office space that offers a mix of open work space and private offices. Multiple upstairs offices have incredible views of the Downtown Square and Denton County Courthouse. The first floor would be a perfect home for an office, retail or restaurant user. With its corner location and outdoor courtyard, it truly is one of the jewels of the Denton Square.

LOCATION OVERVIEW

Rare opportunity to put your business in the heart of beautiful Downtown Denton. The Sherman Building sits at the corner of Elm and Hickory on the Historic Downtown Denton Square. Located across the street from the beautiful Denton County Courthouse, the Sherman Building offers some of the best views of the Downtown Square.

Lease Spaces



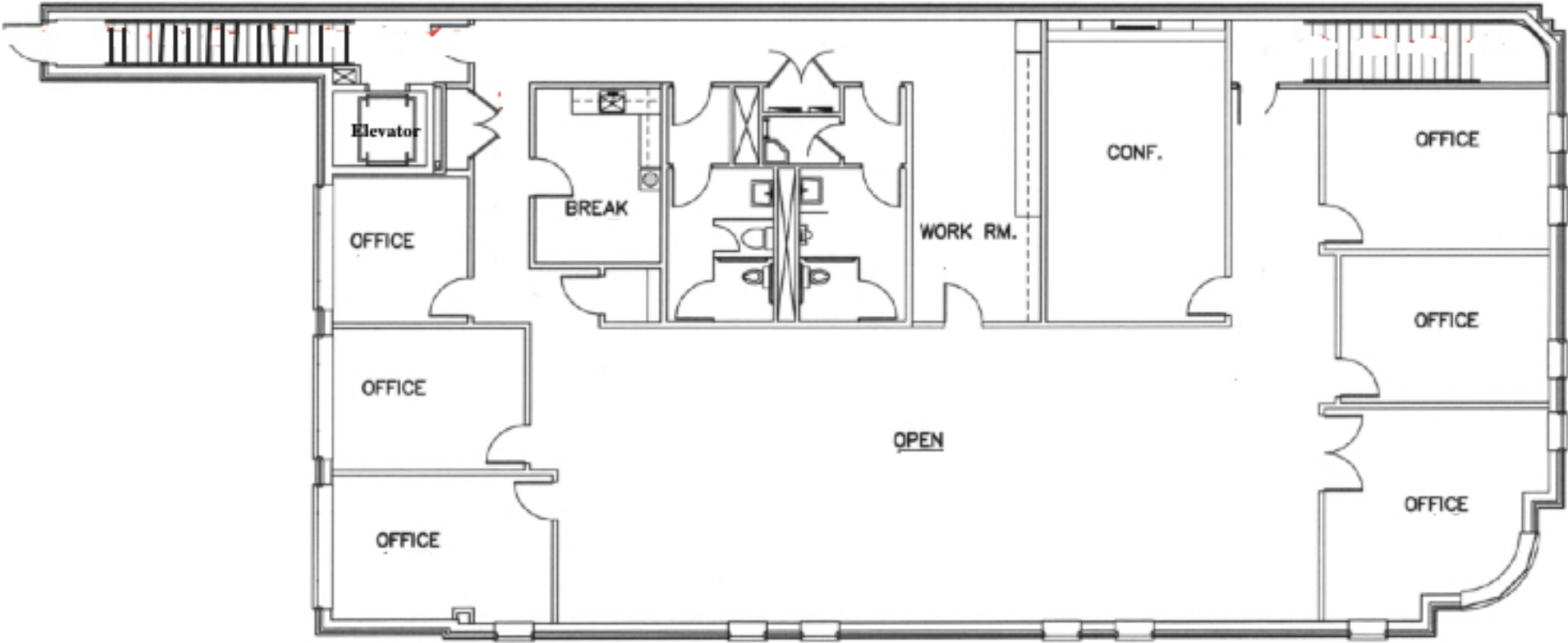
LEASE INFORMATION

Lease Type:	NNN	Lease Term:	Negotiable
Total Space:	4,849 SF	Lease Rate:	Call for Pricing

AVAILABLE SPACES

SUITE	TENANT	SIZE (SF)	LEASE TYPE	LEASE RATE	DESCRIPTION
2nd Floor	Available	4,849 SF	NNN	Call for Pricing	Move in ready Class A Office Space
1st Floor	Studio LaSalle	3,618 SF	NNN	Leased	Salon

Floor Plan



Additional Photos



Location Map



The information presented here is deemed to be accurate, but it has not been independently verified. We make no guarantee, warranty or representation. It is your responsibility to independently confirm accuracy and completeness. All SVN® offices are independently owned and operated.