



Aug 2017 Image ID 30986



Coordinates: 25.9023763, -97.4975131

IDENTIFICATION

Parcel ID 243170

DESCRIPTION

| | | | |
|-----------------------------------|---|-------------------------|--------|
| Type | Building - Commercial - Public Market | Exterior wall materials | Stucco |
| Stylistic influences | Spanish Colonial Revival, Mission Revival | Stories | 2 |
| General architectural description | Two-story stucco building constructed in 1850, restored in 1868, then further remodeled in 1912 and 1948. The rectangular building has a flat roof with a corner tower topped by a dome. Full height pilasters are located on the side of the building, separating arched double doors at the ground level, and paired double-hung windows at the second level. | | |

ROOF

| | | | |
|------------|------------------|----------------|--------|
| Roof shape | Flat, Bell Tower | Roof materials | Stucco |
|------------|------------------|----------------|--------|

DOORS AND WINDOWS

| | | | |
|---------------|--|------------------|--------------------|
| Door types | Multiple entrances, Double door primary entrance | Window types | Fixed, Double-hung |
| Door features | Sidelights, Transom light | Window materials | Aluminum |

HISTORY

| | | | |
|--------------------------|---|-------------------------|----------------------------------|
| Current use | Government - Offices | Historic use | Public Market and Town Hall |
| Year built | 1850 | Source for historic use | Plaque |
| Source for year built | Plaque | Builder | John McDonough, Adolph Seuzeneau |
| Historic name | Market Square | Source for builder | Plaque |
| Source for historic name | Plaque | | |
| History notes | 2000 History: Significantly altered and expanded three times (the last in 1948), the building is the work of several architects. 2000 Significance: Reflecting the evolving use and changing architectural tastes of the community, the building is significant for its association with an important regional architect (Ellis Arbaugh) and as the continuous seat of municipal government in Brownsville since 1852. 2000 Biblio: Bay p. 100; RTHL. | | |

INTEGRITY

| | | | |
|-------------|----------------------------------|--------------------------------------|--|
| Additions | Multiple additions | NRHP aspects of | Workmanship, Feeling, Association, integrity |
| Alterations | Windows replaced, Doors replaced | Setting, Location, Materials, Design | |
| | | Integrity notes | Alterations within historic period |

PRIOR DESIGNATIONS

| | | | |
|--------------------------|------------------------------|-------------------|---|
| Prior priority ranking | High | Prior survey ID | 181 |
| Prior local designations | Brownsville Historical Trail | Prior photo ID | Roll 9:Frame 21 |
| Prior state designations | RTHL | Designation notes | RTHL: 1965 (Public Market and Town Hall). |

RECOMMENDATIONS

| | | | |
|--------------------------------|--|-----------------------------|--|
| Priority ranking | High | NRHP level of significance | Local |
| Recommended local designations | Primary local site | NRHP areas of significance | Community Planning and Development, Commerce |
| Recommended state designations | RTHL | NRHP period of significance | 1850-1971 |
| Recommended NRHP designations | Recommended contributing to an NRHP district | Recommendation notes | Brownsville Historic District |
| NRHP criteria | A | | |

IMAGES



Aug 2017 Image ID 30986

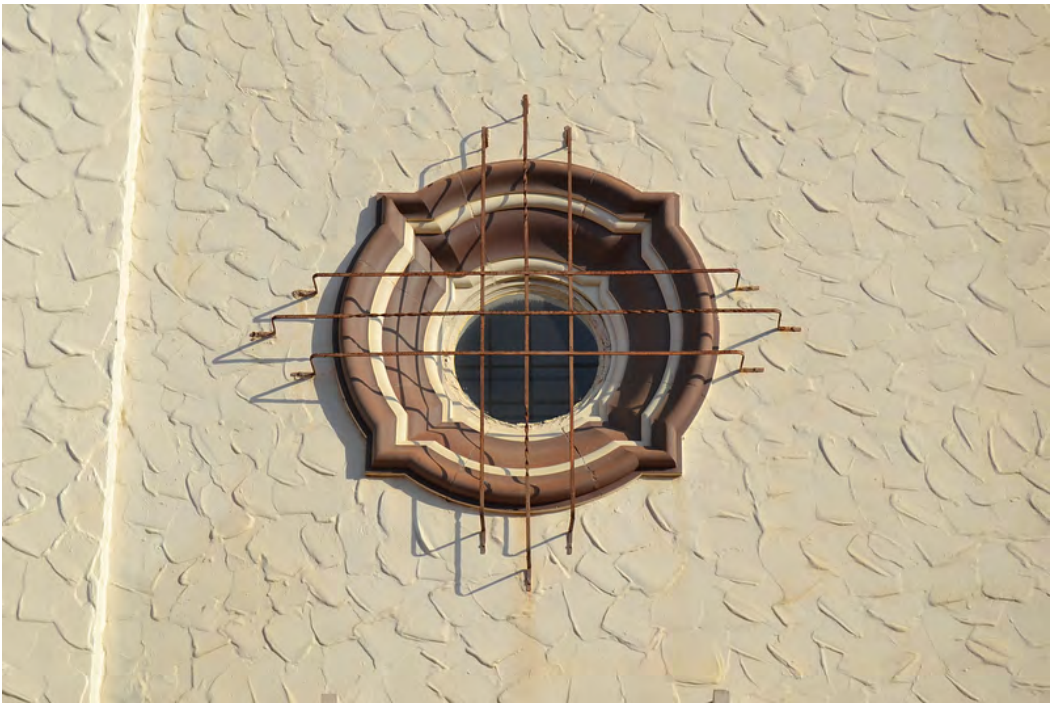


Aug 2017 Image ID 30989

IMAGES



Aug 2017 Image ID 30987



Aug 2017 Image ID 30983

IMAGES



Aug 2017 Image ID 30984



Aug 2017 Image ID 30985

IMAGES

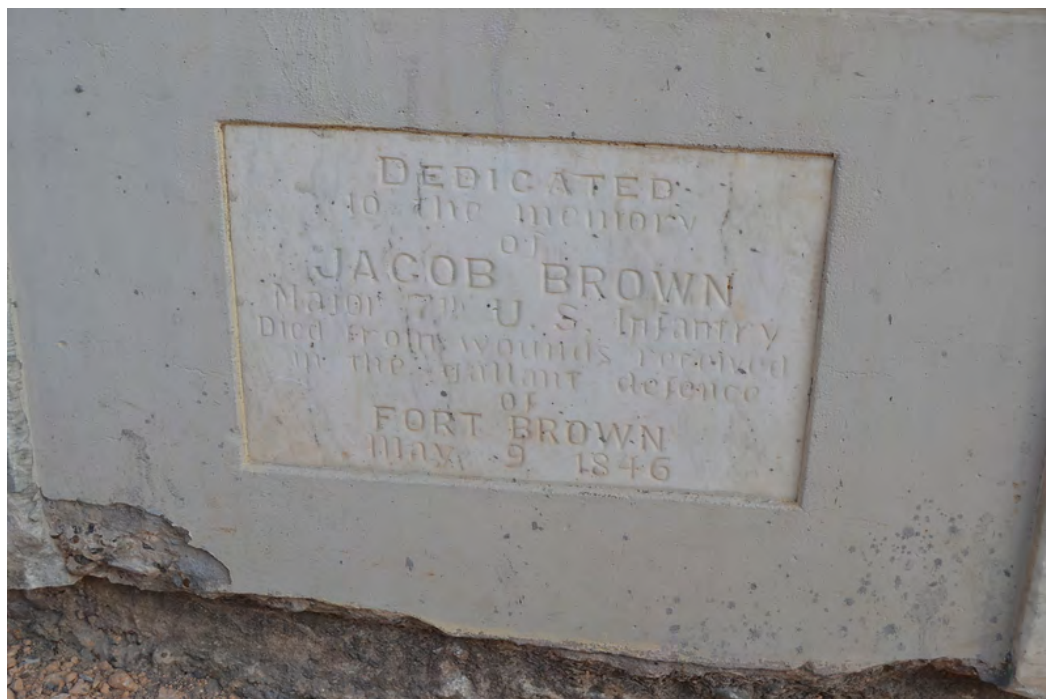


Aug 2017 Image ID 30988



Aug 2017 Image ID 30990

IMAGES



Aug 2017 Image ID 30991

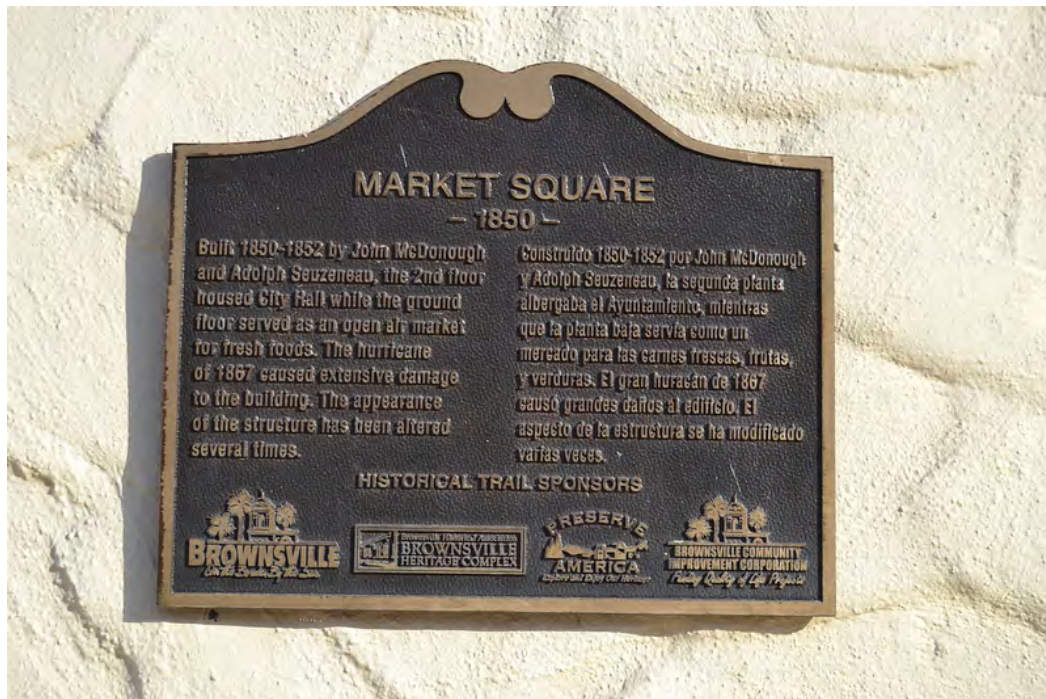


Aug 2017 Image ID 30992

IMAGES



Aug 2017 Image ID 30993



Aug 2017 Image ID 30994

IMAGES



Aug 2017 Image ID 30995



Aug 2017 Image ID 30996

IMAGES



Aug 2017 Image ID 30997



Aug 2017 Image ID 30998

IMAGES



Aug 2017 Image ID 30999



Aug 2017 Image ID 31000

IMAGES



Aug 2017 Image ID 31001



Aug 2017 Image ID 31071

IMAGES



Aug 2017 Image ID 31072



Aug 2017 Image ID 31073

IMAGES



Aug 2017 Image ID 31074



Aug 2017 Image ID 31075

IMAGES



Image ID 38016



Image ID 38017

IMAGES



Image ID 38032