



Aug 2017 Image ID 30371



Coordinates: 25.9024583, -97.499207

**IDENTIFICATION**

Parcel ID 27944  
 Owner FEDERAL BUILDING  
 Legal description LOT 7, 8 & 9 BLK 65 BROWNSVILLE ORIGINAL TOWNSITE (VOL 5 PG 13 MRCC) (FEDERAL BUILDING)

**DESCRIPTION**

Type Building - Government - Courthouse and Post Office  
 Stylistic influences Renaissance Revival  
 General architectural description Four-story brick and stone government building with Renaissance Revival influences, including decorative arches that lead to a recessed entry, corner quoins, a tile roof, a decorative cornice, and terra cotta ornamentation.  
 Exterior wall materials Brick, Stone, Metal, Ceramic tile, Teracotta tile  
 Stories 4

**ROOF**

Roof shape Flat, Hipped  
 Roof materials Spanish tile

**DOORS AND WINDOWS**

Door types Multiple entrances, Double door primary entrance  
 Door features Sidelights, Transom light  
 Window types Casement, Double-hung  
 Window materials Aluminum  
 Window features Transoms

**PORCH**

Porch type Entry, One story  
 Porch roof type Inset  
 Porch support type Classical columns  
 Other porch features Decorative arches

**HISTORY**

Current use Government - Post Office  
 Year built 1931  
 Source for year built Plaque, 2000 Survey  
 Historic name U.S. Post Office and Federal Courthouse  
 Source for historic name 2000 Survey  
 Historic use Government - Post Office  
 Architect James A. Wetmore  
 Source for architect <https://sites.google.com/site/historyofbrownsvilletexas/home/1935-to-1950-regionalism>  
 Builder A.L. Rife Construction  
 Source for builder 2000 Survey  
 History notes 2000 History: Replaced the Richardsonian Romanesque style courthouse of 1892. 2000 Significance: Only example of a Renaissance Revival style public building in the city; excellent design and detailing. 2000 Biblio: Bay p. 114; TGCAMB 8/1931.

**INTEGRITY**

Additions None visible  
 Alterations None visible  
 NRHP aspects of Workmanship, Feeling, Association, integrity Setting, Location, Materials, Design

**PRIOR DESIGNATIONS**

Prior priority ranking High  
 Prior local designations Brownsville Historical Trail, Brownsville Heritage Trail  
 Prior survey ID 104  
 Prior photo ID Roll 8:Frame 9

**RECOMMENDATIONS**

Priority ranking High  
 Recommended local designations Primary local site  
 Recommended state designations RTHL  
 Recommended NRHP designations Recommended contributing to an NRHP district  
 NRHP criteria A, C  
 NRHP level of Local significance  
 NRHP areas of Politics/Government, Architecture significance  
 NRHP period of 1931-1971 significance  
 Recommendation notes Brownsville Historic District

IMAGES



Aug 2017 Image ID 30371



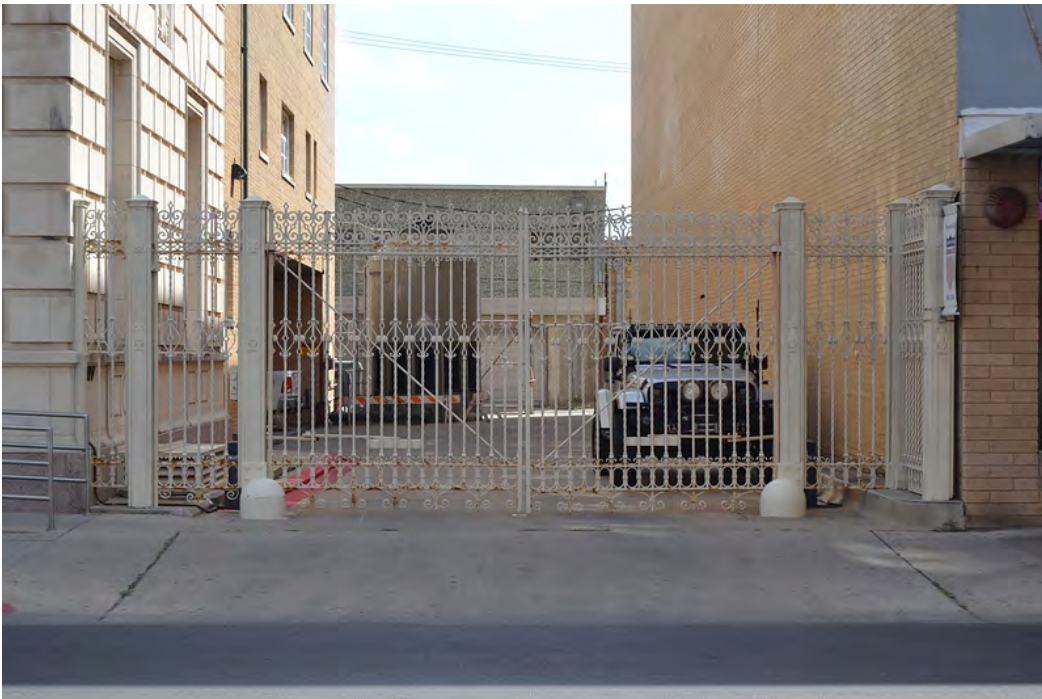
Aug 2017 Image ID 30364



IMAGES



Aug 2017 Image ID 30365



Aug 2017 Image ID 30363

IMAGES



Aug 2017 Image ID 30366



Aug 2017 Image ID 30367



IMAGES



Aug 2017 Image ID 30368



Aug 2017 Image ID 30369

IMAGES



Aug 2017 Image ID 30370



Aug 2017 Image ID 30372

IMAGES



Aug 2017 Image ID 30373



Aug 2017 Image ID 30374



IMAGES



Aug 2017 Image ID 30375



Aug 2017 Image ID 30376



IMAGES



Aug 2017 Image ID 30377



Aug 2017 Image ID 30378

IMAGES



Aug 2017 Image ID 30379



Aug 2017 Image ID 30380



IMAGES



Aug 2017 Image ID 30381



Aug 2017 Image ID 30382

IMAGES



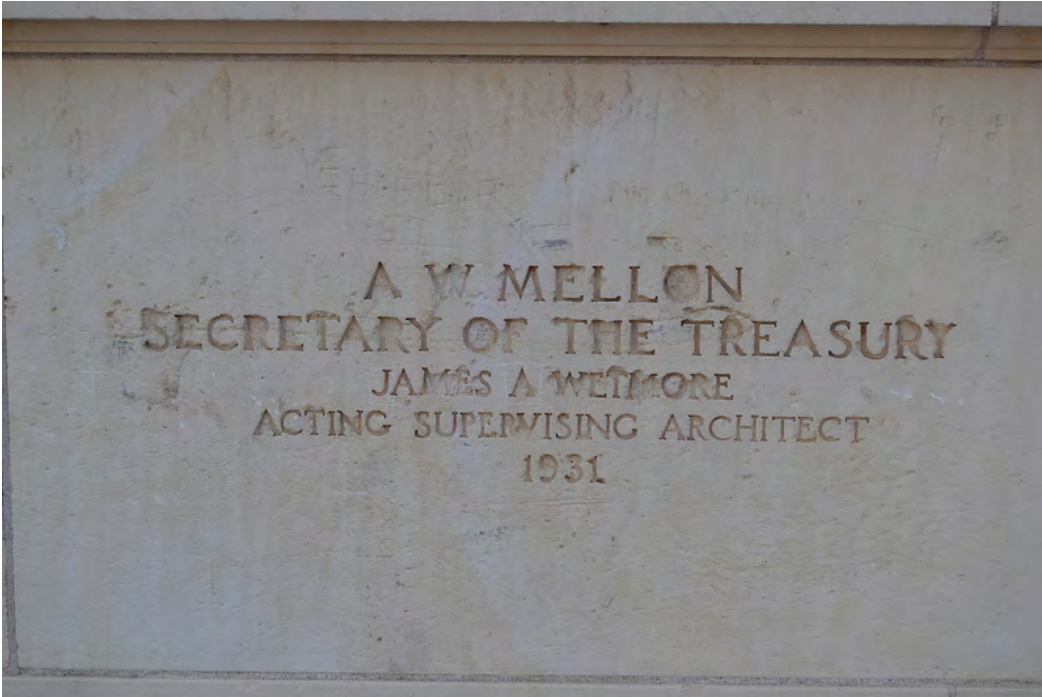
Aug 2017 Image ID 30383



Aug 2017 Image ID 30384



IMAGES



Aug 2017 Image ID 30385



Image ID 38025

IMAGES



Image ID 38026