



Aug 2017 Image ID 30849



Coordinates: 25.9010022, -97.4976754

IDENTIFICATION

Parcel ID 27912**Owner** CERMENO FRANCISCO V & SARA J**Legal description** LOT 10 BLK 63 BROWNSVILLE
ORIGINAL TOWNSITE (VOL 5 PG 13
MRCC)

DESCRIPTION

Type Building - Commercial - Commercial
block - Two-part commercial block**Exterior wall materials** Brick**Stories** 3**Stylistic influences** Italianate**General architectural description** Three-story two-part commercial block with Italianate influences, three bays topped by decorative arches and separated by pilasters, a flat roof with a wide eave and decorative brackets, and a centrally located recessed entry surrounded by fixed store windows and topped by transoms, an awning separates the storefront from the transoms.

ROOF

Roof shape Flat

DOORS AND WINDOWS

Door types Double door primary entrance**Window materials** Aluminum, Wood**Door features** Transom light**Window features** Transoms**Window types** Double-hung, Fixed

HISTORY

Current use Commercial**Historic use** Commercial**Year built** 1911**Architect** H.C. Cooke & Company**Source for year built** 2000 Survey**Source for architect** 2000 Survey**Historic name** Bollack Store**Builder** Ed Singleton**Source for historic name** 2000 Survey**Source for builder** 2000 Survey**History notes** 2000 History: Henry Bollack established a retail store in Brownsville in 1878 and his widow continued to head the dry goods business when this building was constructed in 1911. The third floor remains virtually intact. 2000 Significance: Partial slipcovering of this building can be removed to re-establish its integrity and significance as a finely detailed commercial building of rare scale in Brownsville. Its intact third floor is particularly significant. 2000 Biblio: Bay p. 125; Commercial Record 10/31/1910; Beasley survey.

INTEGRITY

Additions None visible**NRHP aspects of integrity** Workmanship, Feeling, Association,
Setting, Location, Materials, Design**Alterations** Storefront replaced**Integrity notes** Alterations compatible, Alterations
within historic period

PRIOR DESIGNATIONS

Prior priority ranking High**Prior survey ID** 113**Prior local designations** Local landmark**Prior photo ID** Roll 8:Frame 16**Prior state designations** RTHL

RECOMMENDATIONS

Priority ranking High**NRHP level of significance** Local**Recommended local designations** Primary local site**NRHP areas of significance** Architecture**Recommended state designations** RTHL**NRHP period of significance** 1911**Recommended NRHP designations** Recommended contributing to an NRHP
district**Recommendation notes** Brownsville Historic District**NRHP criteria** C

IMAGES



Aug 2017 Image ID 30849



Aug 2017 Image ID 30850

IMAGES



Aug 2017 Image ID 30851



Aug 2017 Image ID 30852

IMAGES



Aug 2017 Image ID 30853

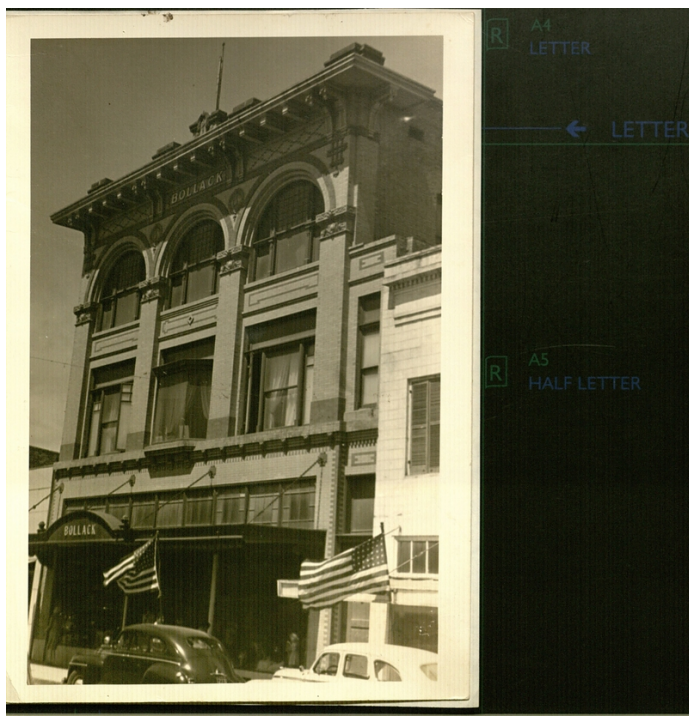


Image ID 33903