

Folk Victorian House, c. 1900

201 N. Walnut Creek Drive

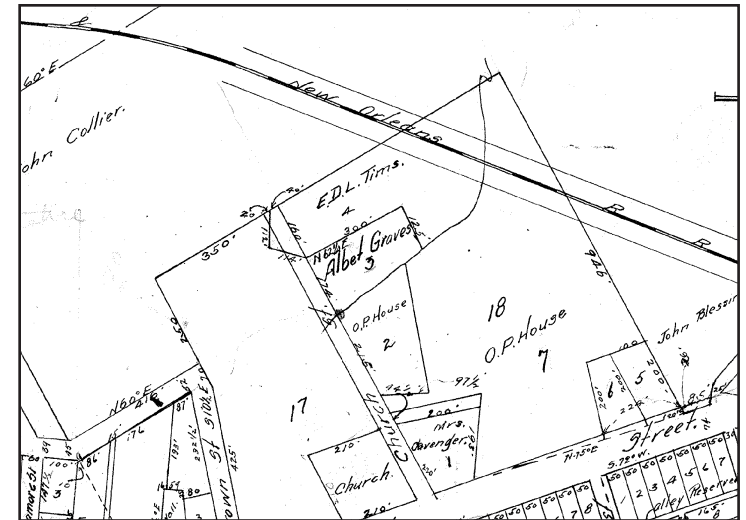
This house is an example of a Folk Victorian style residence built around 1900. This style of house is characterized by a medium-pitch gable roof, gables with pent roofs and a porch set into an ell, often with decorative posts, brackets, and railings. Folk Victorian homes are relatively plain in construction but embellished with decorative trim.

At the time of Mansfield's incorporation in 1890, the property is shown on the town plat as Lot 3, Block 18, belonging to "Albet" Graves, probably J.A. Graves. Lot 3 was on the east side of Church Street (now N. Walnut Creek Drive) across the street from where the Mansfield Male and Female College was established in 1870. Over time, Church Street was realigned to the east and a portion of Lot 3 with the house was now on the west side of Church Street.

Although altered from its original appearance, the house displays some features of a Folk Victorian style residence, including the modified pent roofs and the three gathered gables on the right side of the house. The conversion from a residential to commercial use still maintains the character of a Victorian home.

This house is an officially recognized historic resource of the City of Mansfield.

Source: Tarrant County Deed Records and the Historic Resources Survey Update 1998



Detail from the 1890 town plat showing the property (Lot 3) on the east side of Church Street.



Detail from the 1935 town map showing a large part of Lot 3 is on the west side of Church Street. Church Street was extended to reach the Webb community northeast of Mansfield.