

# LANDSCAPE

101 N. Main St. | Temple, Texas | February 2019

*Not for regulatory approval, permitting, or construction*



## DESIGN REQUEST

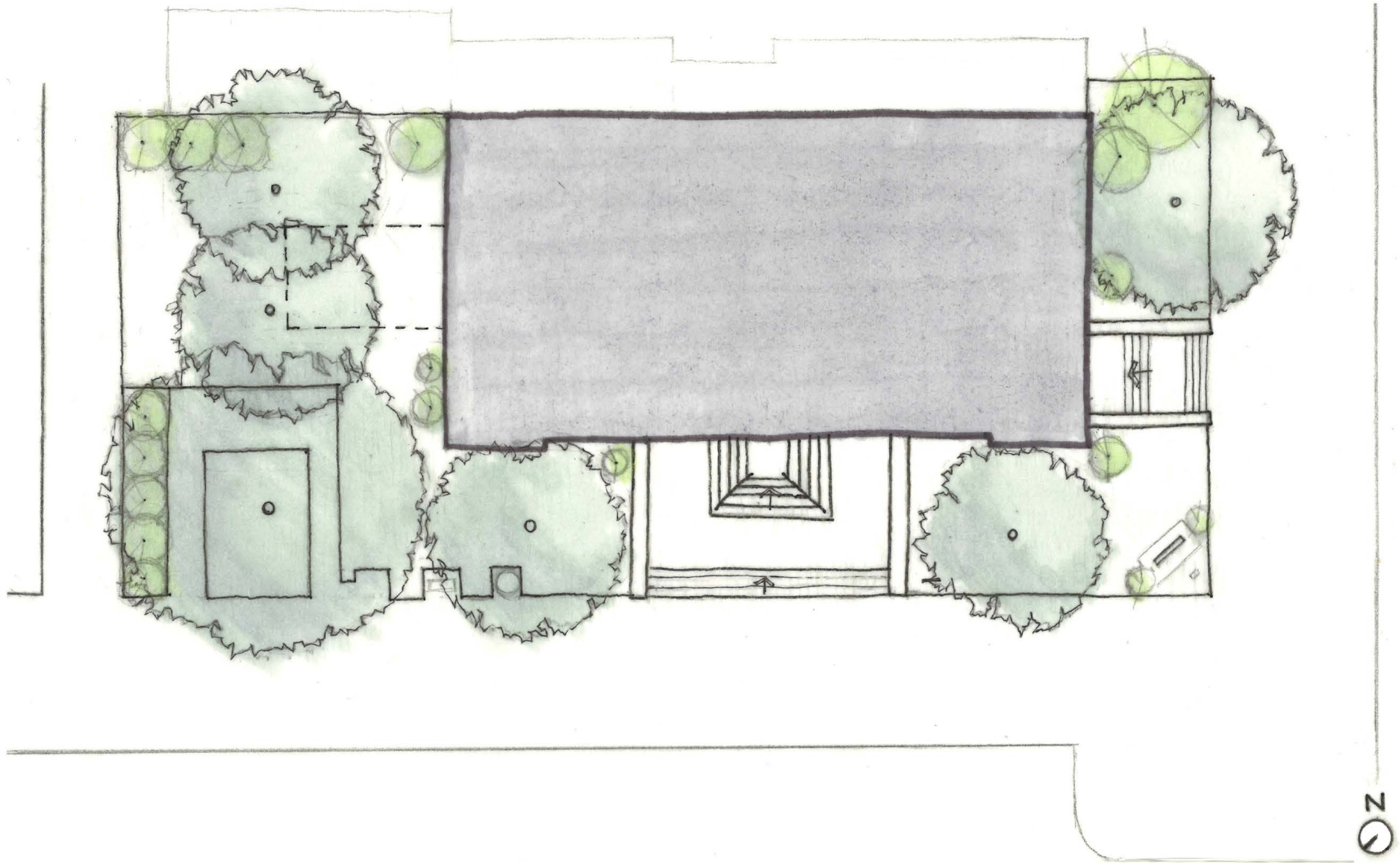
Design assistance was requested for the Temple Community Resource Center. The City would like to improve the surrounding landscape with native Texas plants and xeriscaping. They would also like to add lighting and seating on the north side of the building for guests and pedestrians.

## EXISTING CONDITIONS

The Center is housed in the historic Temple Library building that was originally constructed as a post office. Several large trees surround the building. The ground is covered gravel. Box shrubs line the north side of the site. One concrete bench is located at the northwest corner of the building, while a sign for the Center is located at the southwest corner. The photos on this page illustrate the existing conditions.

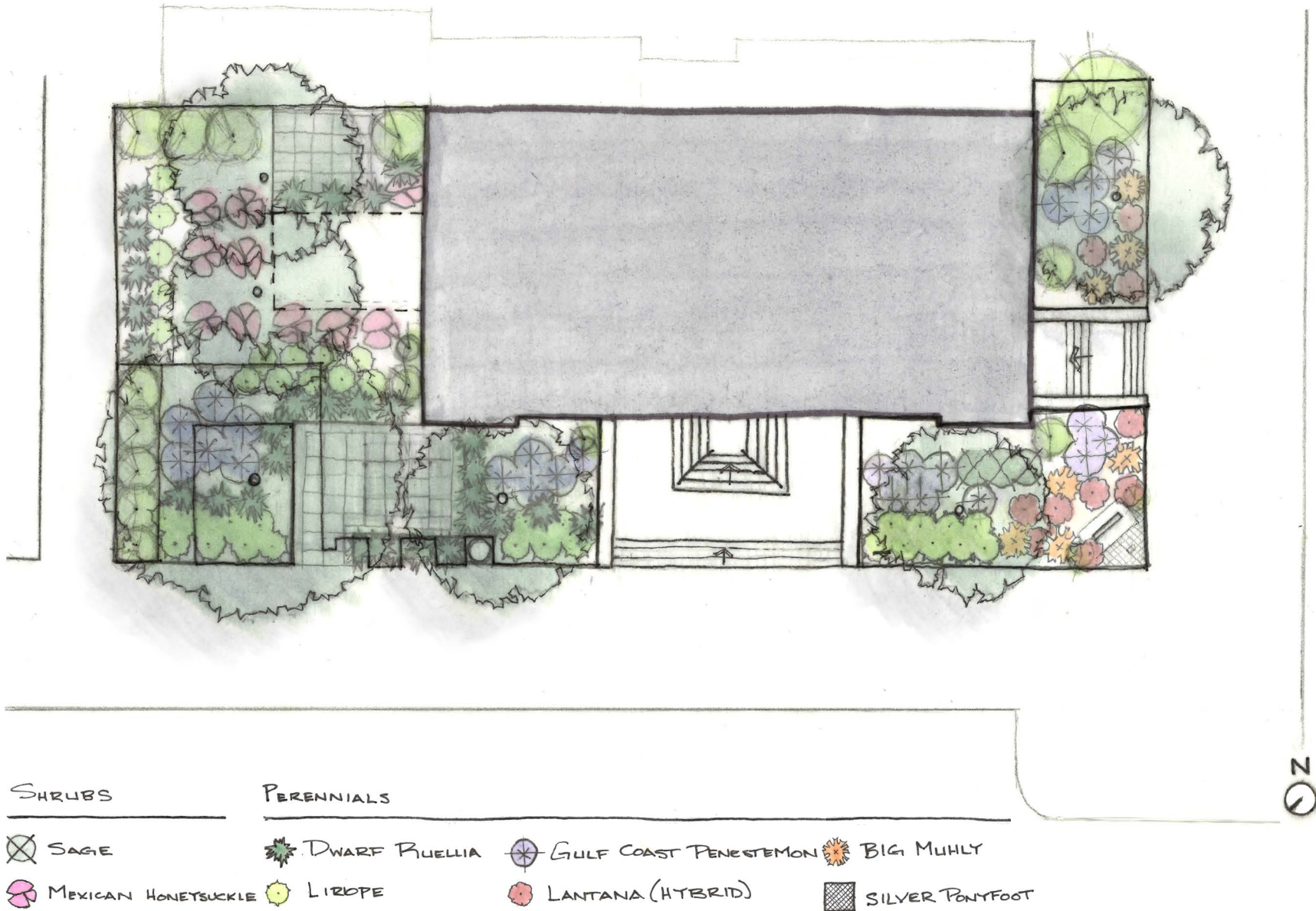


# Site Plan Analysis - Existing Conditions





# Site Plan Improvements - Existing oak trees and box shrubs included in the proposed landscape.





# Proposed Landscape View #1



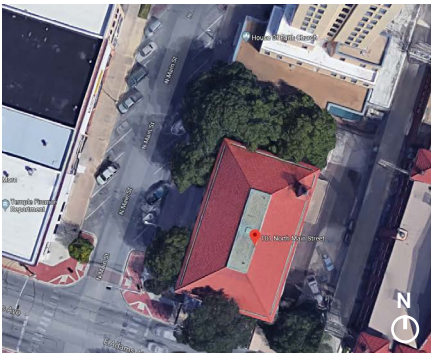
## Seasonal Sun Positioning

The Earth's varying distance from the sun at different times of the year causes the sun to hold different positions in the sky as seasons change. **These positions will cause trees and other structures to cast shade at varying angles throughout the year.** For example, the area illustrated above is north facing with additional shade cast by the existing oak trees and surrounding buildings. The plant types shown above can survive in a shady area. A guide to these plant types is included on the following pages and on the proposed site plan.



## Proposed Landscape View #2

The aerial shown below identifies the location of the building in relationship to the sun. The illustration on the previous page (**View #1**) recommends native plant types for the limited sunlight conditions in this area. As shown in View #1, a variety of liropes and gulf coast penstemon perennials surround the outdoor seating area which allow for a design that can be easily maintained due to low water requirements.



Since the **Southwest** area of the site receives a greater amount of direct sun light, the recommended plant types shown in the illustration above, allow for a more drought tolerant native and adapted plant types that are capable of withstanding longer periods of direct sun exposure. **Please refer to the proposed site plan and the following landscape recommendations for further information on the plant types illustrated above.**



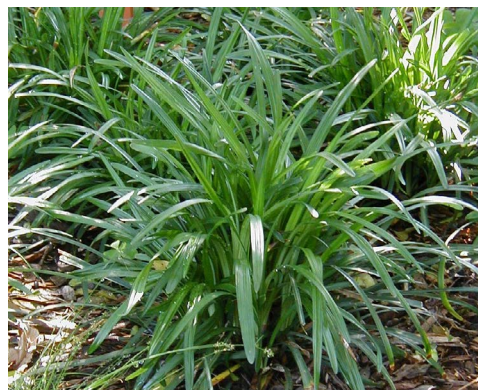
# Landscaping Recommendations



## Penstemon, Gulf Coast

---

**Plant Type:** Perennials  
*Native to Texas*  
**Water Requirements:** Low  
**Light:** Part Shade  
**Plant Height**  
Min: 1.5 ft. Max: 2.5 ft.  
**Plant Spread**  
Min: 1ft. Max: 1.5ft



## Liriope

---

**Plant Type:** Groundcover  
**Water Requirements:** Medium  
**Light:** Sun/Part Shade  
**Plant Height**  
Min: 1 ft. Max: 1.5 ft  
**Plant Spread**  
Min: 1 ft. Max: 1 ft.



## Mexican Honeysuckle

---

**Plant Type:** Perennials  
**Water Requirements:** Low  
**Light:** Part Shade  
**Plant Height**  
Min: 3 ft. Max: 3 ft.  
**Plant Spread**  
Min: 4 ft. Max: 1.5ft



## Penstemon, Gulf Coast

---

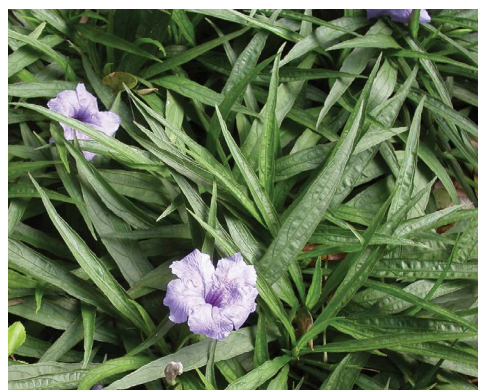
**Plant Type:** Perennials  
*Native to Texas*  
**Water Requirements:** Low  
**Light:** sun/ Part Shade  
**Plant Height**  
Min: 1.5 ft  
Max: 2.5 ft  
**Plant Spread**  
Min: 1 ft Max: 1.5 ft



## Dwarf Ruellia

---

**Plant Type:** Groundcover  
**Water Requirements:** Medium  
**Light:** Sun/Part Shade  
**Plant Height**  
Min: 1 ft.  
Max: 1.5 ft.  
**Plant Spread**  
Min: 1 ft. Max: 1 ft.



## Lantana (Hybrid)

---

**Plant Type:** Perennials  
*Hybrid with native percentage*  
**Water Requirements:** Low  
**Light:** Part Shade  
**Plant Height**  
Min: 1.5 ft Max: 2.5 ft  
**Plant Spread**  
Min: 1 ft. Max: 1.5 ft.



# Landscaping Recommendations



## Big Muhly

---

**Plant Type:** Grasses

*Native to Texas*

**Water Requirements:** Medium

**Light:** Sun/Part Shade

**Plant Height**

**Min:** 3 ft. **Max:** 4 ft.

**Plant Spread**

**Min:** 3 ft. **Max:** 4 ft.



## 1. Corten

---

## 2. Decomposed Granite

---

## 3. Pavers

---



## Silver Ponyfoot

---

**Plant Type:** Groundcovers

*Native to Texas*

**Water Requirements:** Low

**Light:** Sun/ Part Shade

**Plant Height**

**Min:** 2 in. **Max:** 4 in.

**Plant Spread**

**Min:** 2.5 ft. **Max:** 2.5 ft.



## Additional Recommendations:

- Select plants based on the amount of sunlight or shade in the area.
- Decomposed granite or hardwood mulch are good alternatives for the numerous native plants identified in this report.
- Use pervious pavement for the seating areas. This allows water to soak into the ground and the surrounding landscape such as, the pavers or stone without mortar, mulch or pervious coverage (decomposed granite).
- Reduce the usage of turf because this plant type generally requires more water and chemicals to maintain.
- Please review the following link for additional information and a guide to [native and adapted landscape plants in Central Texas](#).

# Lighting Recommendations

**Consider adding lights to the existing tree to illuminate the outdoor space.** Exterior lighting in a historic downtown provides comfortable and safer conditions at night for pedestrians.

Lighting sources should be shielded from direct glare and should conform to the International Dark Sky Association guidelines - <http://darksky.org/lighting/lighting-basics/>. To minimize the harmful effects of light pollution, lighting should:

- only be on when needed,
- only light the area that needs it,
- be no brighter than necessary,
- minimize blue light emissions, and
- be fully shielded (pointing downward).

There are several types of lights that can be used:

1. **Moonlighting** - This is an especially effective way of using lighting when you have larger trees in your space. The spotlights are placed high up in the tree aimed down, washing the branches and ground below in light. It creates an impressive effect when used with an open-branched tree.
2. **Hanging Lights** - Simple outdoor-grade pendants can be hung from the trees. This is an interesting, almost art-like installation effect.
3. **String Lights** - Not to be confused with holiday lights, string lights can be wrapped around the trunks of the trees, which creates a nice glowing ambiance. Harlingen used this method to light their streetscape trees all year long.
4. **Festoon** - These larger, round string lights can be suspended between trees to illuminate an outdoor space.





# Outdoor Furniture Recommendations

According to **Project for Public Spaces**, the authority on successful public spaces, "Seating that is accessible, comfortable, well-maintained, and located in the right places is critical to successful placemaking."

As shown in View #1, the perfect location for seating is at the northwest corner of the building. The seating is placed out of the way of the flow of pedestrian traffic, but seated guests will still have a view of street activity. The large existing trees also provide a good amount of shade. When selecting a seating type, consider the following:

- Will seating be permanently fixed or movable? Will the space be visible by staff who can monitor the furniture?
- Is a table necessary? Will the space serve as a dining area?
- How many people will the space serve? Are you trying to encourage people to linger or just offering a short-term resting spot?
- What is your budget? What is the cost of the seating?

## 1. MOVABLE CHAIRS

Project for Public Spaces recommends movable chairs as the "best kind of seating," because they are more comfortable than benches and are relatively inexpensive. Furthermore, people can arrange chairs wherever they feel most comfortable. Providing movable furniture opens up the possibility that it might be stolen. However, if the area is supervised by an attendant, or if the furniture is located near another amenity or activity where staff is present, then vandalism and theft become much less likely.

## 2. PICNIC TABLES

An alternative seating option is picnic tables that can be secured to the ground. Picnic tables are typically very sturdy and heavy. The images to the right offer a simple, clean, modern solution for the space.

## 3. TRASH CANS

If people are going to be eating in the space, do not forget the trash cans! People will only walk about 25 feet to a trash can before they decide to leave it on the ground. Use cans with solid sides and a lid or cover to prevent leaks and smells.

